

TYPE PDH

Features

- Manufactured from high strength 6061-T6 aluminum alloy
- UL 1059 Recognized 90° C 600 Volts and CSA Certified
- Electro-tin plated
- High Short Circuit Rating 100K RMS SYM Amps
- For use with building code or fine stranded (flexible) conductor

Benefits

- Suitable for use with either copper or aluminum conductors
- Ensures reliability
- Provides low contact resistance
- Added protection

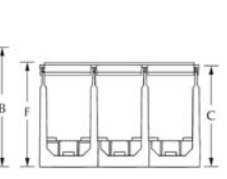
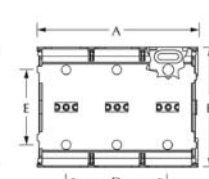
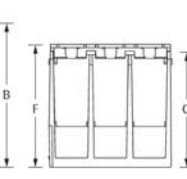
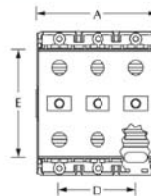
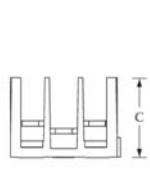
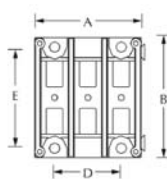


Fig. 1

Fig. 2

Fig. 3



Catalog Number	Fig. No.	Amps	Rated Conductor Range		High SCCR Conditions										SCCR RMS SYM Amps	Volts Max	Dimensions (in.)						Cover ID
					Suitable Conductors Per Pole		Overcurrent Protection Fuse Required Class/Max Amp Rating†						A	B			C	D	E	F w/cover			
					Line	Load	J	T	RK1	RK5	G	CC											
PDH-11-2-1*	1	115	(1) 2-14	(1) 2-14	(1) 2-6	(1) 2-6	200	200	200	100	60	30	200,000	600	0.83	2.29	1.53	-	1.93	1.60	C-2-1		
PDH-11-2-2*	1	115	(1) 2-14	(1) 2-14	(1) 2-6	(1) 2-6	200	200	200	100	60	30	200,000	600	1.46	2.29	1.53	-	1.93	1.60	C-2-2		
PDH-11-2-3*	1	115	(1) 2-14	(1) 2-14	(1) 2-6	(1) 2-6	200	200	200	100	60	30	200,000	600	2.10	2.29	1.53	1.27	1.93	1.60	C-2-3		
PDH-11-2-4*	1	115	(1) 2-14	(1) 2-14	(1) 2-6	(1) 2-6	200	200	200	100	60	30	200,000	600	2.75	2.29	1.53	1.92	1.93	1.60	C-2-4		
PDH-14-2-1*	1	115	(1) 2-14	(4) 10-18	(1) 2-6	(4) 10-14	200	200	200	100	60	30	200,000	600	0.83	2.29	1.53	-	1.93	1.60	C-2-1		
PDH-14-2-2*	1	115	(1) 2-14	(4) 10-18	(1) 2-6	(4) 10-14	200	200	200	100	60	30	200,000	600	1.46	2.29	1.53	-	1.93	1.60	C-2-2		
PDH-14-2-3*	1	115	(1) 2-14	(4) 10-18	(1) 2-6	(4) 10-14	200	200	200	100	60	30	200,000	600	2.10	2.29	1.53	1.27	1.93	1.60	C-2-3		
PDH-14-2-4*	1	115	(1) 2-14	(4) 10-18	(1) 2-6	(4) 10-14	200	200	200	100	60	30	200,000	600	2.75	2.29	1.53	1.92	1.93	1.60	C-2-4		
PDH-11-2/0-1	2	175	(1) 2/0-14	(1) 2/0-14	(1) 2/0-6	(1) 2/0-6	200	200	200	100	60	30	100,000	600	1.00	3.00	2.42	-	2.25	2.57	-		
PDH-11-2/0-2	2	175	(1) 2/0-14	(1) 2/0-14	(1) 2/0-6	(1) 2/0-6	200	200	200	100	60	30	100,000	600	1.82	3.00	2.42	0.81	2.25	2.57	-		
PDH-11-2/0-3	2	175	(1) 2/0-14	(1) 2/0-14	(1) 2/0-6	(1) 2/0-6	200	200	200	100	60	30	100,000	600	2.55	3.00	2.42	1.63	2.25	2.57	-		
PDH-11-2/0-A†	2	175	(1) 2/0-14	(1) 2/0-14	(1) 2/0-6	(1) 2/0-6	200	200	200	100	60	30	100,000	600	0.89	3.00	2.42	-	2.25	-	NA		
PDH-14-2/0-1	2	175	(1) 2/0-14	(4) 4-14	(1) 2/0-6	(4) 4-14	200	200	200	100	60	30	100,000	600	1.00	3.00	2.42	-	2.25	2.57	-		
PDH-14-2/0-2	2	175	(1) 2/0-14	(4) 4-14	(1) 2/0-6	(4) 4-14	200	200	200	100	60	30	100,000	600	1.82	3.00	2.42	0.81	2.25	2.57	-		
PDH-14-2/0-3	2	175	(1) 2/0-14	(4) 4-14	(1) 2/0-6	(4) 4-14	200	200	200	100	60	30	100,000	600	2.55	3.00	2.42	1.63	2.25	2.57	-		
PDH-14-2/0-A†	2	175	(1) 2/0-14	(4) 4-14	(1) 2/0-6	(4) 4-14	200	200	200	100	60	30	100,000	600	0.89	3.00	2.42	-	2.25	-	NA		
PDH-12-350-1	3	310	(1) 350-6	(2) 2/0-14	(1) 350-3/0	(1) 2/0-1	600	600	400	200	60	30	100,000	600	1.96	4.00	3.49	-	3.38	3.49	-		
PDH-12-350-2	3	310	(1) 350-6	(2) 2/0-14	(1) 350-3/0	(1) 2/0-1	600	600	400	200	60	30	100,000	600	3.66	4.00	3.49	1.70	3.38	3.49	-		
PDH-12-350-3	3	310	(1) 350-6	(2) 2/0-14	(1) 350-3/0	(1) 2/0-1	600	600	400	200	60	30	100,000	600	5.36	4.00	3.49	3.40	3.38	3.49	-		
PDH-14-400-1	3	335	(1) 400-6	(4) 2-14	(1) 400-3/0	(4) 2-8	400	400	400	100	60	30	100,000	600	1.96	4.00	3.49	-	3.38	3.49	-		
PDH-14-400-2	3	335	(1) 400-6	(4) 2-14	(1) 400-3/0	(4) 2-8	400	400	400	100	60	30	100,000	600	3.66	4.00	3.49	1.70	3.38	3.49	-		
PDH-14-400-3	3	335	(1) 400-6	(4) 2-14	(1) 400-3/0	(4) 2-8	400	400	400	100	60	30	100,000	600	5.36	4.00	3.49	3.40	3.38	3.49	-		
PDH-26-2/0-1	3	350	(2) 2/0-14	(6) 4-14	(2) 2/0-2	(6) 4-8	400	400	400	100	60	30	100,000	600	1.96	4.00	3.49	-	3.38	3.49	-		
PDH-26-2/0-2	3	350	(2) 2/0-14	(6) 4-14	(2) 2/0-2	(6) 4-8	400	400	400	100	60	30	100,000	600	3.66	4.00	3.49	1.70	3.38	3.49	-		
PDH-26-2/0-3	3	350	(2) 2/0-14	(6) 4-14	(2) 2/0-2	(6) 4-8	400	400	400	100	60	30	100,000	600	5.36	4.00	3.49	3.40	3.38	3.49	-		
PDH-14A-500-1	3	380	(1) 500-4	(3) 2-14 (1) 350-6	(1) 500-3/0	(4) 350-6	600	600	400	200	60	30	100,000	600	1.96	4.00	3.49	-	3.38	3.49	-		
PDH-14A-500-2	3	380	(1) 500-4	(3) 2-14 (1) 350-6	(1) 500-3/0	(4) 350-6	600	600	400	200	60	30	100,000	600	3.66	4.00	3.49	1.70	3.38	3.49	-		
PDH-14A-500-3	3	380	(1) 500-4	(3) 2-14 (1) 350-6	(1) 500-3/0	(4) 350-6	600	600	400	200	60	30	100,000	600	5.36	4.00	3.49	3.40	3.38	3.49	-		
PDH-11-600-1	3	420	(1) 600-2	(1) 600-2	(1) 600-2	(1) 600-2	400	400	400	200	60	30	100,000	600	1.96	4.00	3.49	-	3.38	3.49	-		
PDH-11-600-2	3	420	(1) 600-2	(1) 600-2	(1) 600-2	(1) 600-2	400	400	400	200	60	30	100,000	600	3.66	4.00	3.49	1.70	3.38	3.49	-		
PDH-11-600-3	3	420	(1) 600-2	(1) 600-2	(1) 600-2	(1) 600-2	400	400	400	200	60	30	100,000	600	5.36	4.00	3.49	3.40	3.38	3.49	-		

All wire sizes, unless noted otherwise, are American Wire Gauge (AWG)

* Cover not standard, available as an option. † Adder Block, cover not available.

† For further details on conductors, fuse ratings, and additional SCCR ratings please refer to product data sheets.

TYPE PDH

Features

- Manufactured from high strength 6061-T6 aluminum alloy
- UL 1059 Recognized 90° C 600 Volts and CSA Certified
- Electro-tin plated
- High Short Circuit Rating 100K RMS SYM Amps
- For use with building code or fine stranded (flexible) conductor

Benefits

- Suitable for use with either copper or aluminum conductors
- Ensures reliability
- Provides low contact resistance
- Added protection

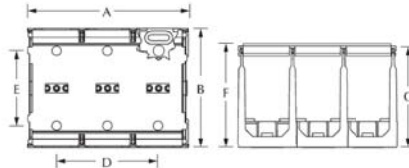


Fig. 3

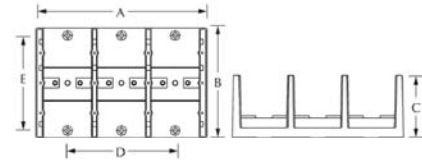


Fig. 4

Catalog Number	Fig. No.	Amps	Rated Conductor Range		High SCCR Conditions								SCCR RMS SYM Amps	Volts Max	Dimensions (in.)						Cover ID
					Suitable Conductors Per Pole		Overcurrent Protection Fuse Required Class/Max Amp Rating†								A	B	C	D	E	F w/cover	
					Line	Load	J	T	RK1	RK5	G	CC									
PDH-18-600-1	3	420	(1) 600-2	(8) 2-14	(1) 600-3/0	(8) 2-8	400	400	400	200	60	30	100,000	600	1.96	4.00	3.49	-	3.38	3.49	-
PDH-18-600-2	3	420	(1) 600-2	(8) 2-14	(1) 600-3/0	(8) 2-8	400	400	400	200	60	30	100,000	600	3.66	4.00	3.49	1.70	3.38	3.49	-
PDH-18-600-3	3	420	(1) 600-2	(8) 2-14	(1) 600-3/0	(8) 2-8	400	400	400	200	60	30	100,000	600	5.36	4.00	3.49	3.40	3.38	3.49	-
PDH-112-600-1	3	420	(1) 600-2	(12) 4-14	(1) 600-3/0	(12) 4-8	600	600	400	200	60	30	100,000	600	1.96	4.00	3.49	-	3.38	3.49	-
PDH-112-600-2	3	420	(1) 600-2	(12) 4-14	(1) 600-3/0	(12) 4-8	600	600	400	200	60	30	100,000	600	3.66	4.00	3.49	1.70	3.38	3.49	-
PDH-112-600-3	3	420	(1) 600-2	(12) 4-14	(1) 600-3/0	(12) 4-8	600	600	400	200	60	30	100,000	600	5.36	4.00	3.49	3.40	3.38	3.49	-
PDH-19A-600-1	3	420	(1) 600-2	(6) 2-14 (3) 1/0-14	(1) 600-3/0	(9) 1/0-8	600	600	400	200	60	30	100,000	600	1.96	4.00	3.49	-	3.38	3.49	-
PDH-19A-600-2	3	420	(1) 600-2	(6) 2-14 (3) 1/0-14	(1) 600-3/0	(9) 1/0-8	600	600	400	200	60	30	100,000	600	3.66	4.00	3.49	1.70	3.38	3.49	-
PDH-19A-600-3	3	420	(1) 600-2	(6) 2-14 (3) 1/0-14	(1) 600-3/0	(9) 1/0-8	600	600	400	200	60	30	100,000	600	5.36	4.00	3.49	3.40	3.38	3.49	-
PDH-22-250-1	3	510	(2) 250-1/0	(2) 250-1/0	(2) 250-1/0	(2) 250-1/0	600	600	400	200	60	30	100,000	600	1.96	4.00	3.49	-	3.38	3.49	-
PDH-22-250-2	3	510	(2) 250-1/0	(2) 250-1/0	(2) 250-1/0	(2) 250-1/0	600	600	400	200	60	30	100,000	600	3.66	4.00	3.49	1.70	3.38	3.49	-
PDH-22-250-3	3	510	(2) 250-1/0	(2) 250-1/0	(2) 250-1/0	(2) 250-1/0	600	600	400	200	60	30	100,000	600	5.36	4.00	3.49	3.40	3.38	3.49	-
PDH-28-250-1	3	510	(2) 250-1/0	(8) 2-14	(2) 250-1/0	(8) 2-14	600	600	600	200	60	30	100,000	600	1.96	4.00	3.49	-	3.38	3.49	-
PDH-28-250-2	3	510	(2) 250-1/0	(8) 2-14	(2) 250-1/0	(8) 2-14	600	600	600	200	60	30	100,000	600	3.66	4.00	3.49	1.70	3.38	3.49	-
PDH-28-250-3	3	510	(2) 250-1/0	(8) 2-14	(2) 250-1/0	(8) 2-14	600	600	600	200	60	30	100,000	600	5.36	4.00	3.49	3.40	3.38	3.49	-
PDH-212-250-1	3	510	(2) 250-1/0	(12) 4-14	(2) 250-1/0	(12) 4-14	600	600	600	200	60	30	100,000	600	1.96	4.00	3.49	-	3.38	3.49	-
PDH-212-250-2	3	510	(2) 250-1/0	(12) 4-14	(2) 250-1/0	(12) 4-14	600	600	600	200	60	30	100,000	600	3.66	4.00	3.49	1.70	3.38	3.49	-
PDH-212-250-3	3	510	(2) 250-1/0	(12) 4-14	(2) 250-1/0	(12) 4-14	600	600	600	200	60	30	100,000	600	5.36	4.00	3.49	3.40	3.38	3.49	-
PDH-22-350-1*	4	620	(2) 350-4	(2) 350-4	(2) 350-4	(2) 350-4	450	450	400	200	60	30	100,000	600	3.17	5.50	3.12	-	4.75	3.18	C-6-1
PDH-22-350-2*	4	620	(2) 350-4	(2) 350-4	(2) 350-4	(2) 350-4	450	450	400	200	60	30	100,000	600	5.85	5.50	3.12	2.69	4.75	3.18	C-6-2
PDH-22-350-3*	4	620	(2) 350-4	(2) 350-4	(2) 350-4	(2) 350-4	450	450	400	200	60	30	100,000	600	8.54	5.50	3.12	5.38	4.75	3.18	C-6-3
PDH-22-500-1*	4	760	(2) 500-4	(2) 500-4	(2) 500-4	(2) 500-4	600	600	400	200	60	30	100,000	600	3.17	5.50	3.12	-	4.75	3.18	C-6-1
PDH-22-500-2*	4	760	(2) 500-4	(2) 500-4	(2) 500-4	(2) 500-4	600	600	400	200	60	30	100,000	600	5.85	5.50	3.12	2.69	4.75	3.18	C-6-2
PDH-22-500-3*	4	760	(2) 500-4	(2) 500-4	(2) 500-4	(2) 500-4	600	600	400	200	60	30	100,000	600	8.54	5.50	3.12	5.38	4.75	3.18	C-6-3
PDH-28-500-1*	4	760	(2) 500-6	(8) 2/0-14	(2) 500-250	(8) 2/0-14	600	600	400	200	60	30	100,000	600	3.17	5.50	3.12	-	4.75	3.18	C-6-1
PDH-28-500-2*	4	760	(2) 500-6	(8) 2/0-14	(2) 500-250	(8) 2/0-14	600	600	400	200	60	30	100,000	600	5.85	5.50	3.12	2.69	4.75	3.18	C-6-2
PDH-28-500-3*	4	760	(2) 500-6	(8) 2/0-14	(2) 500-250	(8) 2/0-14	600	600	400	200	60	30	100,000	600	8.54	5.50	3.12	5.38	4.75	3.18	C-6-3
PDH-212-500-1*	4	760	(2) 500-6	(12) 4-14	(2) 500-250	(12) 4-8	400	400	400	200	60	30	100,000	600	3.17	5.50	3.12	-	4.75	3.18	C-6-1
PDH-212-500-2*	4	760	(2) 500-6	(12) 4-14	(2) 500-250	(12) 4-8	400	400	400	200	60	30	100,000	600	5.85	5.50	3.12	2.69	4.75	3.18	C-6-2
PDH-212-500-3*	4	760	(2) 500-6	(12) 4-14	(2) 500-250	(12) 4-8	400	400	400	200	60	30	100,000	600	8.54	5.50	3.12	5.38	4.75	3.18	C-6-3

All wire sizes, unless noted otherwise, are American Wire Gauge (AWG)

* Cover not standard, available as an option.

† For further details on conductors, fuse ratings, and additional SCCR ratings please refer to product data sheets.